



Toronto Transit Commission

2009

System Quick Facts

Daily Trips

(Average Business Day)

- Revenue Passengers (Fares Collected) - 1,495,000
- Revenue Passengers and Transfer Fares - 2,487,000
- Of the 151 bus and streetcar routes, 148 make 245 connections with the Subway/Scarborough RT system during the A.M. rush period. (Surfaces routes increased by 1 in 2009 - 145 Downtown/Humber Bay Express).
- Wednesday, September 16, 2009: highest 1-day ridership - 1,669,000

Rail Transit Quick Facts

Subway, Scarborough Rapid Transit, Streetcar

Daily Trips

(Average Business Day)

- Revenue Passengers (Fares Collected) - 800,000
- Revenue Passengers and Transfer Fares - 1,235,000

Busiest Stations

(Estimated passenger trips to and from trains daily)

- Bloor (Yonge-University-Spadina) - 205,500
- Yonge (Bloor-Danforth) - 198,100
- St. George (Bloor-Danforth) - 119,800
- St. George (Yonge-University-Spadina) - 119,800
- Union - 102,200
- Number of Stations - 69 (subway interchanges counted once)
- Number of Escalators - 294
- Number of Elevators - 78
(In service at: Bathurst, Bayview, Bessarion, Bloor-Yonge, Broadview, Davisville, Don Mills, Downsview, Dundas West, Eglinton, Eglinton West, Finch, Jane, Kennedy, Kipling, Leslie, Main Street, North York Centre, Queen, Scarborough Centre, Sheppard-Yonge, Spadina, St. Clair, St. Clair)

West (serves mezzanine level only), St. George, Osgoode, Queen's Park, Queens Quay, Union, York Mills.)

- Number of Commuter Parking Lots - 29 (13,718 spaces). (Parking lots decreased by 1 in 2009 - Kipling-Westwood).

Entire System

	2009	2008	Increase/(Decrease)
Passenger Trips¹	471,233,000	466,700,000	4,533,000

Number of Routes/Lines

Bus Routes	140	139	1
Streetcar Routes	11	11	-
Subway Lines	3	3	-
ICTS (Intermediate Capacity Transit System) (Scarborough RT Line)	1	1	-
Total	155 ²	154 ²	1

Kilometres of Routes/Lines

Bus Routes³	7,206.1	7,218.9	(12.8)
Streetcar Routes³	304.6	304.8	(.2)

Subway/SRT Lengths⁴

Yonge-University-Spadina	30.2	30.2	-
Bloor-Danforth	26.2	26.2	-
Sheppard	5.5	5.5	-
Scarborough RT	6.4	6.4	-

Miles of Routes/Lines

Bus Routes³	4,477.7	4,485.6	(7.9)
Streetcar Routes³	189.3	189.4	(.1)

Subway/SRT Lengths⁴

Yonge-University-Spadina	18.8	18.8	-
Bloor-Danforth	16.3	16.3	-
Sheppard	3.4	3.4	-
Scarborough RT	4.0	4.0	-

1 Excludes Wheel-Trans.

2 Excludes Blue Night Network (24 routes) and seasonal service (1 route).

3 Includes round trip length of routes and their branches along shared roadways.

4 Subway/Scarborough RT lengths are given in one-way kilometres and miles.

	2009	2008	Increase/(Decrease)
--	-------------	-------------	----------------------------

Passenger Vehicle Fleet¹			
Buses (kneeling; lift/ramp; wheelchair positions)			
Accessible 12-metre (40-foot)	1,644	1,498	146
Conventional 12-metre (40-foot)	138	239	(101)
Total	1,782	1,735	45
Streetcars			
Canadian Light Rail Vehicle (CLRV)	196	196	-
Articulated Light Rail Vehicle (ALRV)	52	52	-
Total	248	248	-
Subway/RT Cars²			
Subway Cars	678	678	-
Scarborough RT Cars	28	28	-
Total	706	706	-
Kilometres Operated³ (In thousands)			
Bus	123,652	114,179	9,473

Streetcar	12,337	12,150	187
Subway	75,512	74,890	622
Scarborough RT (ICTS)	3,246	3,311	(65)
Total	214,747	204,529	10,218
Miles Operated³ (In thousands)			
Bus	76,850	70,963	5,887
Streetcar	7,668	7,551	117
Subway	49,931	46,544	387
Scarborough RT (ICTS)	2,017	2,058	(41)
Total	133,466	127,116	6,350

1 Includes in-service vehicles only.

2 All Subway/RT trains are accessible. 372 T-1 subway cars are also equipped with a wheelchair/scooter position.

3 Includes inside Toronto regular revenue services only.

Easier Access

For getting around Toronto, the better way is becoming the easier way for seniors and persons with disabilities. The TTC is committed to improving access to the conventional system for all its customers. The TTC is everyone's transit system.

1,644

Number of accessible buses. These are kneeling buses equipped with a flip-ramp or lift. They are identified by blue lights on either side of the front destination sign, and the blue international wheelchair symbol displayed above the front right bumper next to the entrance door. All fully accessible buses include 2 wheelchair/scooter positions.

372

Number of fully accessible T-1 subway cars. Each of these cars has 1 wheelchair/scooter position. T-1 trains run on all three subway lines: B-D, Y-U-S and Sheppard. All subway/rt cars can be boarded by people using wheelchairs, scooters or other mobility devices.

153

Number of accessible bus routes, which includes 20 Blue Night routes and 5 Community Bus routes. These routes are served by kneeling buses equipped with a flip-ramp or lift. All fully accessible buses include 2 wheelchair/scooter positions.

29

Number of accessible subway/rt stations, which are equipped with elevators specifically for people using wheelchairs, scooters, walkers, other mobility devices or baby strollers. These stations are:

- Yonge-University-Spadina Subway: Downsview, Eglinton West, St. George, Queen's Park, Osgoode, Union, Queen, Dundas, Bloor-Yonge, St. Clair, Davisville, Eglinton, York Mills, Sheppard-Yonge, North York Centre, Finch.
- Bloor-Danforth Subway: Kipling, Jane, Dundas West, Bathurst, Spadina, St. George, Bloor-Yonge, Broadview, Main Street, Kennedy.
- Sheppard Subway: Sheppard-Yonge, Bayview, Bessarion, Leslie, Don Mills.
- Scarborough RT: Kennedy, Scarborough Centre.

Note: Subway interchanges counted once.

Wheel-Trans

A division of the TTC responsible for door-to-door accessible transit service for people with physical disabilities who have the most difficulty using conventional transit services. Service is provided beyond City limits to the airport, and to established boundary transfer points in order to co-ordinate trips with other accessible door-to-door transit services within the Greater Toronto Area (GTA).

	2009	2008	Increase/(Decrease)
Passenger Trips ¹	2,416,699	2,114,182	305,517
Average Daily Trips ¹	6,621	5,792	829
Kilometres Operated ¹	16,801,854	15,378,008	1,423,846
Miles Operated ¹	10,442,420	9,557,494	884,926
Scheduled Vehicle	700,515	655,924	44,601

Service Hours ¹	700,515	655,624	44,891
Revenue Vehicles ¹	394	329	65
Number of Registrants	59,395	54,847	4,548

Community Bus

Accessible, fixed-route bus service primarily focused on individuals who have some difficulty accessing the conventional transit system. Wheel-Trans registrants and seniors comprise the majority of customers served. However, all individuals are eligible for the service.

	2009	2008	Increase/(Decrease)
Passenger Trips	81,031	85,065	(4,034)
Average Daily Trips ²	310	326	(16)
Kilometres Operated	153,203	153,203	-
Miles Operated	95,216	95,216	-
Scheduled Vehicle Service Hours	10,269	10,269	-
Revenue Vehicles	7	5	2
Number of Routes	5	5	-

¹ Includes contract vehicles (accessible taxis and sedan taxis).

² Community Bus does not operate on weekends or holidays.

Wheel-Trans Trip Booking and Confirmation System at mywheel-trans.ttc.ca

Wheel-Trans Customer Service email: wheeltrans.customerservice@ttc.ca

Key Facts

- In 2009, the TTC set an all-time record of 471.2 million rides, surpassing 2008's record of 466.7 million.

- In 2009, the TTC carried its 27 billionth rider. One billion customers are carried approximately every 30 months.
- In 2009, the TTC expanded its ability to communicate critical information to its customers by joining Twitter and Facebook. Anyone can receive information about disruptions, route changes and events at twitter.com/TTCnotices or become a fan of TTC at facebook.com. To receive Subway/RT disruption notifications by email, go to ttc.ca and register under Service Advisories.
- The TTC is Toronto's transit system. It's the better way. More than 12,000 employees serve over 465 million customers annually. With nearly 1.5 million passengers on a typical weekday, the TTC has one of the highest per capita ridership rates in North America.
- The TTC serves some 4.5 million people in the Greater Toronto Area, with a network of subways, streetcars, buses, and a specialized service, Wheel-Trans, for people who require accessible transportation. The TTC is committed to meeting the growing needs of the region with subway and light rail expansion, carrying an additional 175 million riders by 2021.
- Estimated number of cars that a TTC vehicle replaces in the A.M. rush:
 - Bus: 45
 - CLRV: 65
 - ALRV: 95
 - 4-car SRT train: 200
 - 6-car subway train: 910

[Figures are based on TTC loading standards for each mode divided by A.M. rush average automobile occupancy (1.10) for inbound trips to the City of Toronto.]

- Busiest streetcar route: 504 King - 56,700 weekday riders.
- Busiest bus route: 36 Finch West - 42,600 weekday riders.
- Total number of TTC employees as of December 31, 2009 - 12,411
- The TTC is a pay-as-you-enter, pay-as-you-board transit system. Entry is by cash, ticket, token, valid pass or valid transfer. Exact fare is required on buses and streetcars.
- The Ride Guide is the TTC's official map for transit routes and information. The Ride Guide is FREE! Copies are available at all Subway/RT Collector Booths, TTC Head Office at 1900 Yonge St., or by viewing it on the TTC's website at www.ttc.ca. A condensed version is also available in the Toronto Area Yellow Pages Directory.
- The TTC offers a variety of value-added passes and single-trip fares geared to different travel needs. Metropasses and Weekly Passes are not only transferable, they are eligible for a Federal Tax Credit. For more details, please visit www.ttc.ca, or to calculate your tax credit at the Government of Canada website at www.transitpass.ca.

This is the TTC's official Work Safe-Home Safe logo. It identifies the program of safety culture transformation in the workplace.



Transit City Network

The TTC's Toronto Transit City - Light Rapid Transit Plan, unanimously endorsed by the Commission on March 21, 2007, is a 120-km network of dedicated and fully accessible streetcar rapid transit lines.

Sheppard East LRT

This route will run between Don Mills Station and Meadowvale Road in northeast Scarborough; will intersect with Sheppard Subway, GO Transit's Stouffville line, Scarborough RT and the future Don Mills LRT and Scarborough Malvern LRT.

Etobicoke-Finch West LRT

This route will originate at Finch Station on the Yonge Subway and run west to Humber College's North Campus; will intersect with the Spadina Subway extension and the future Jane LRT.

Eglinton Crosstown LRT

This route will link Kennedy Station in the east with Pearson Airport and the Mississauga Transitway in the west; will run underground for approximately 10 kilometres from Black Creek Drive in the west to Brentcliffe Drive in the east; will intersect with the Bloor-Danforth Subway, Yonge-University-Spadina Subway, Scarborough RT and the future Don Mills LRT and Jane LRT.

Scarborough RT

This project will redevelop the current system into a modern LRT, as well as extend the project from its current terminus at McCowan Station north to Sheppard Avenue and Malvern Town Centre.

Don Mills LRT

This route will run from the Bloor-Danforth Subway to Steeles Avenue; will intersect with the future Eglinton Crosstown LRT and the Sheppard East LRT.

Jane LRT

This route will run from the Bloor-Danforth Subway to Steeles Avenue; will intersect with the Spadina Subway extension and the future Eglinton Crosstown LRT and Finch West LRT.

Scarborough Malvern LRT

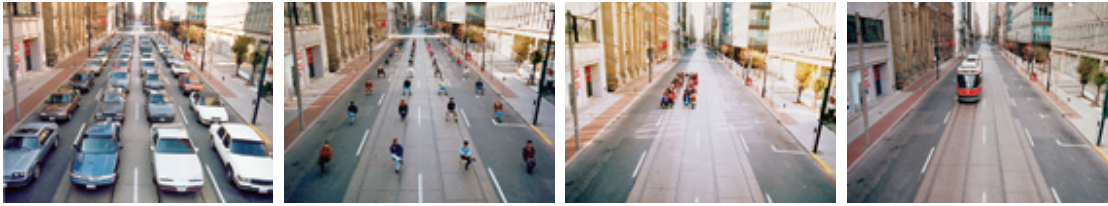
This route will originate at Kennedy Station and travel east along Eglinton Avenue, Kingston Road and Morningside Avenue to Sheppard Avenue; will intersect with the future Sheppard East LRT.

Waterfront West LRT

This route is an extension of the existing Harbourfront LRT; will serve Union Station on the Yonge-University-Spadina Subway, Exhibition Place, Parkdale, High Park and GO Transit's Lakeshore West line.

On The Environment

A simple solution to unlocking gridlock



Cars vs. Transit: In the A.M. rush, it takes 55 cars (average 1.10 automobile occupancy for inbound trips to the City of Toronto) to carry 61 commuters who can otherwise be comfortably seated on 1 ALRV streetcar heading downtown.

TTC Environmental Plan

The TTC Environmental Plan is committed to reducing the environmental impacts from the Commission's facility and vehicle operations, and will comply with all legal and applicable requirements. The policy addresses all aspects of the business, including:

- Transit ridership.
- Greenhouse gas reduction.
- Energy efficiency.
- The 3Rs: reduce, reuse, recycle.
- Responsible purchasing.
- Green design and buildings.

TTC eco-friendly facts

- Each work day, nearly 1.5 million people ride the system, which results in nearly one million fewer trips by car – that equals less greenhouse gas emissions.
- In 2009, the TTC operated 694 diesel/electric hybrid buses. Hybrid buses make up close to 40 per cent of the fleet.
- In 2009, the TTC diverted 79 per cent of its solid waste from landfills, and plans to increase the diversion rate to 80 per cent by 2010.
- More than 90 per cent of the TTC bus fleet is equipped with bicycle racks.
- The TTC has successfully tested the use of solar-powered microwave transmitters, and is continuing efforts to purchase at least 25 per cent of its electricity from green sources by 2012.
- The TTC has a Green Procurement Policy, which takes into full consideration the environmental footprint of the product or service that is being purchased, without sacrificing safety standards.

Official Opening Dates

- Yonge Subway: March 30, 1954
- University Subway: February 28, 1963
- Bloor-Danforth Subway (Keele to Woodbine): February 25, 1966
- Bloor-Danforth Subway Extensions to Islington and Warden: May 10, 1968
- Yonge Subway Extension to York Mills: March 30, 1973
- Yonge Subway Extension to Finch: March 29, 1974
- Spadina Subway: January 27, 1978
- Bloor-Danforth Subway Extensions to Kipling and Kennedy: November 21, 1980
- Scarborough RT: March 22, 1985
- North York Centre Subway Station: June 18, 1987
- Harbourfront Light Rail Transit: June 22, 1990

- Spadina Subway Extension to Downsview: March 31, 1996
- Spadina Streetcar: July 27, 1997
- Harbourfront Extension: July 21, 2000
- Sheppard Subway: November 22, 2002
- York University Busway: November 20, 2009

Operating Statistics are compiled by the TTC Corporate Communications Department.