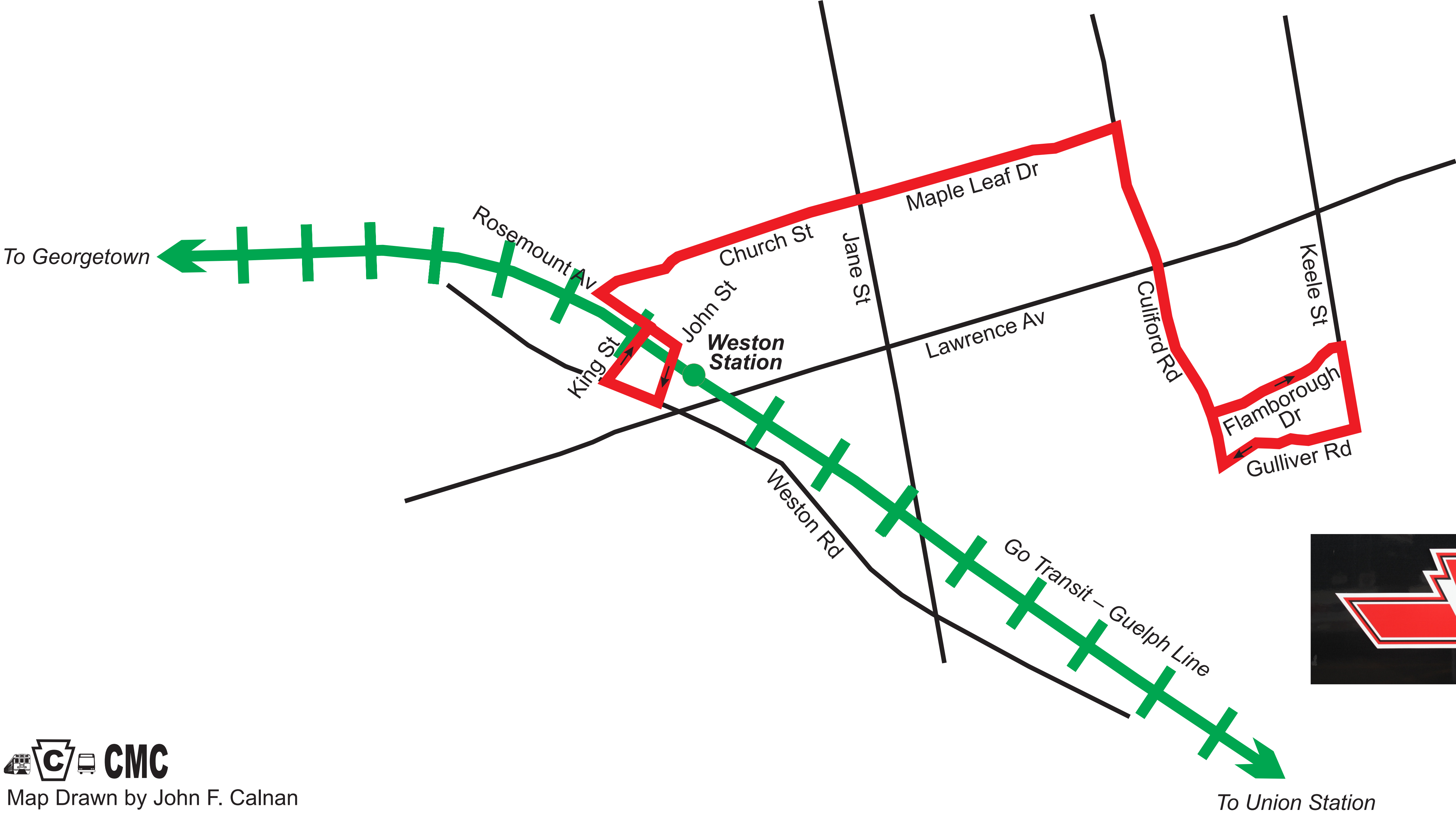


MAPLE LEAF

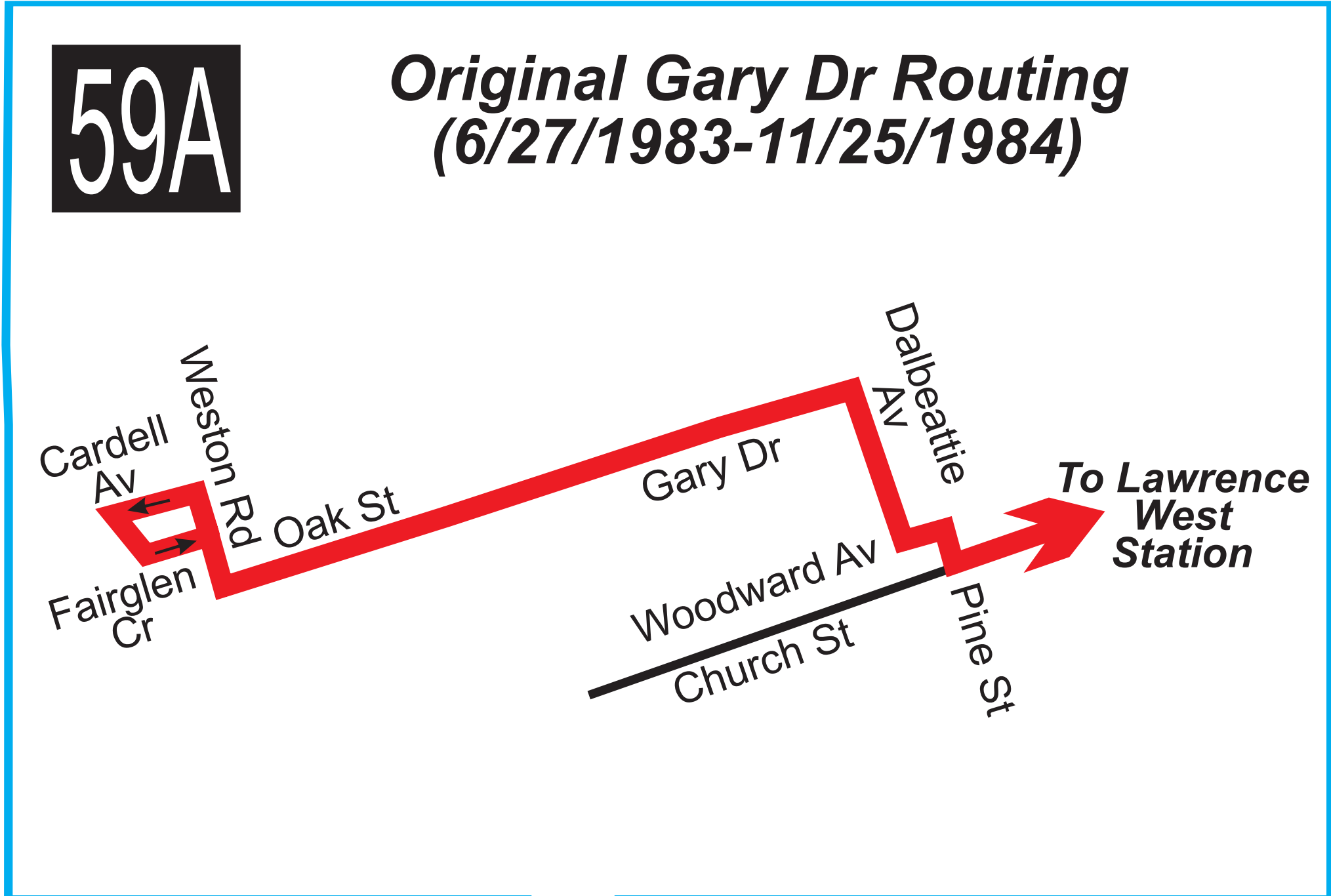
January 6, 1975 To January 27, 1978



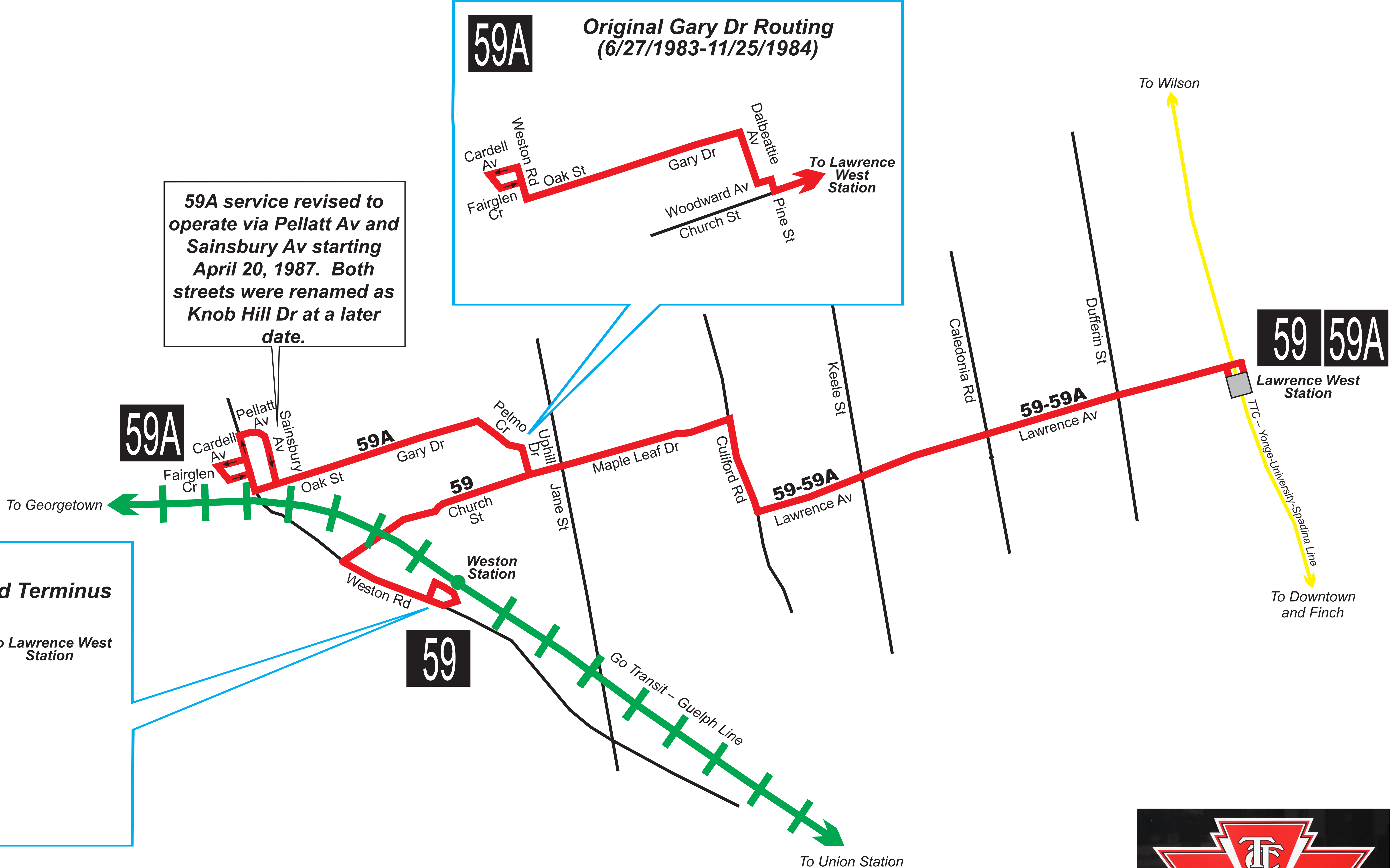
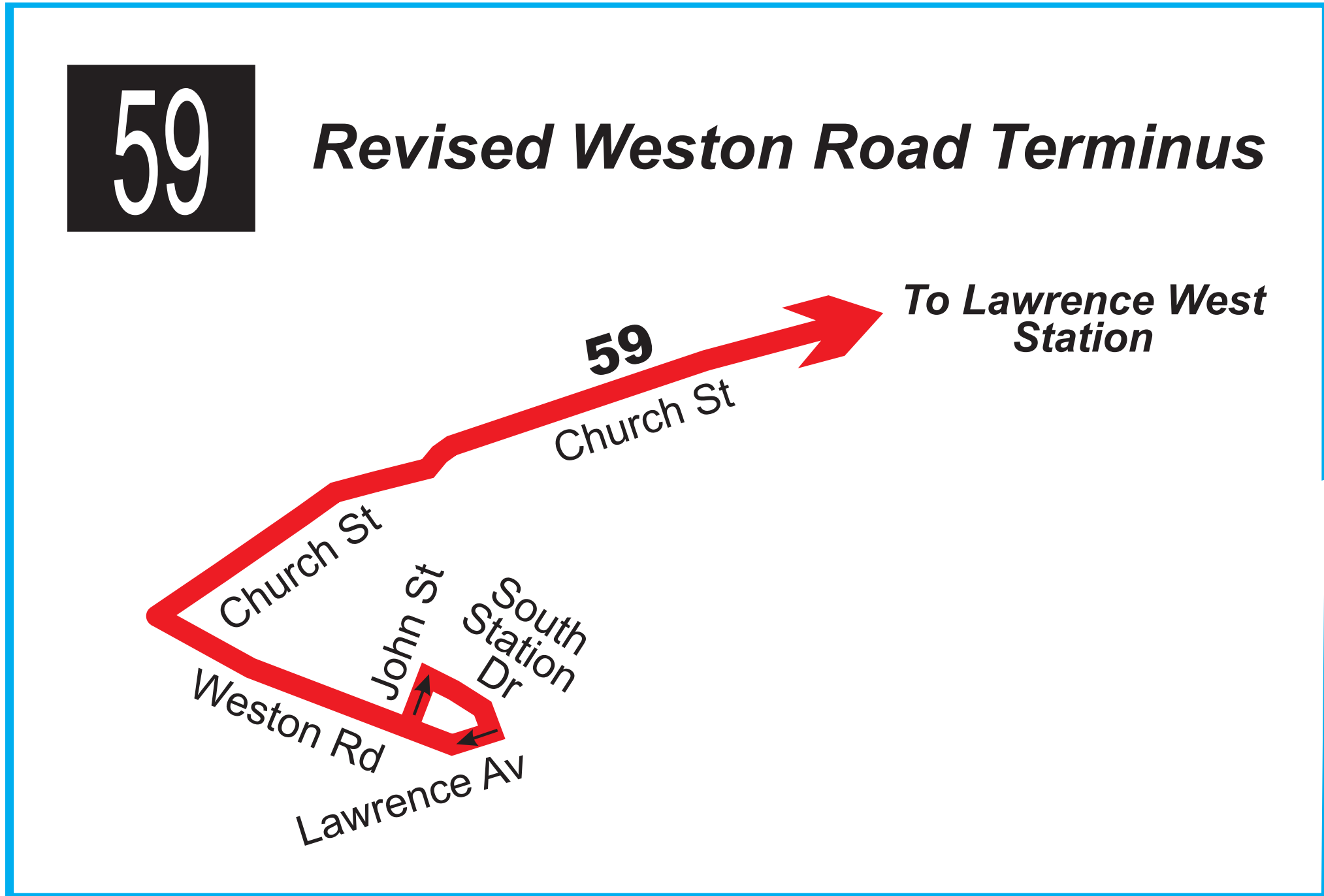
Map Drawn by John F. Calnan

59 MAPLE LEAF

January 30, 1978 To November 23, 1991



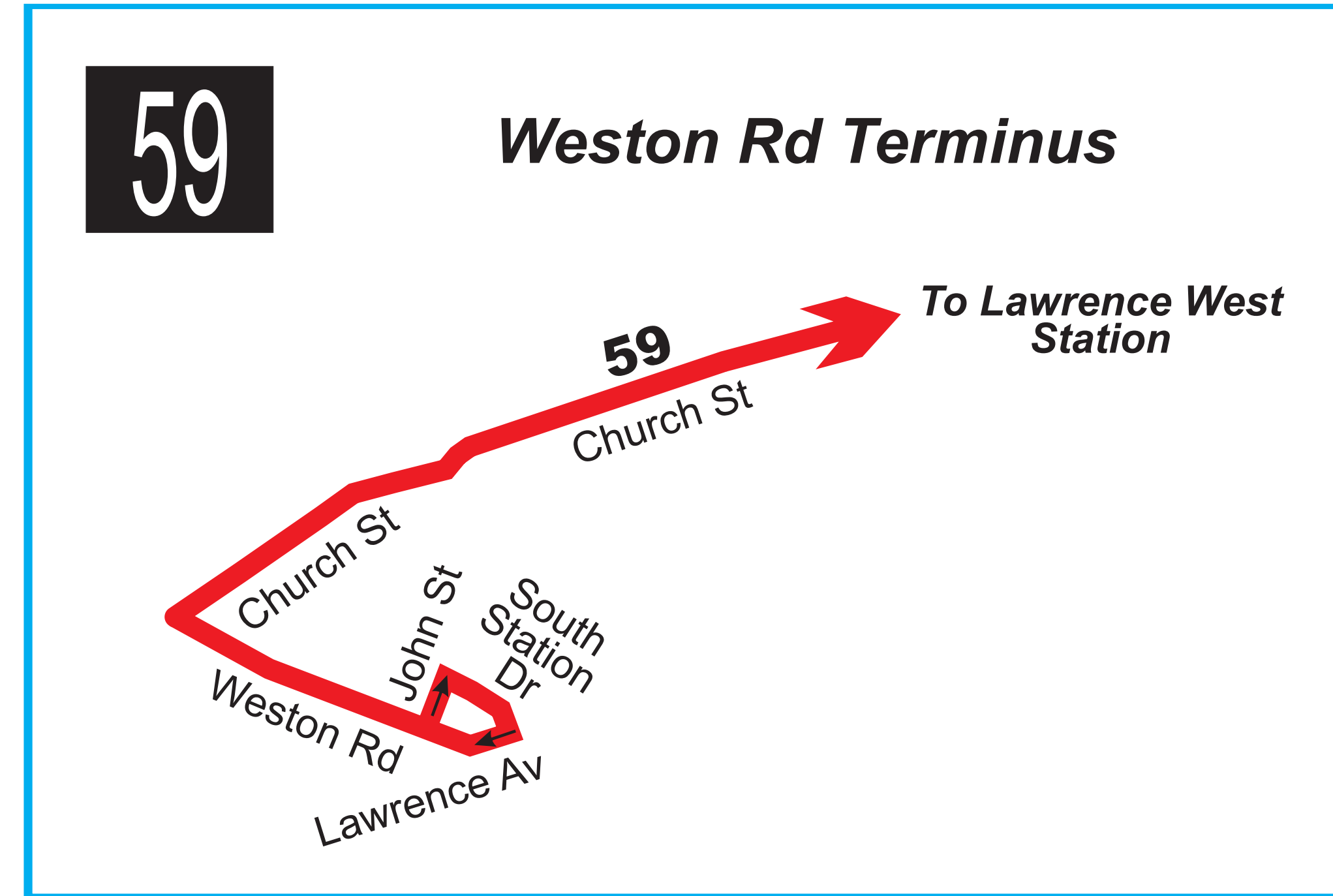
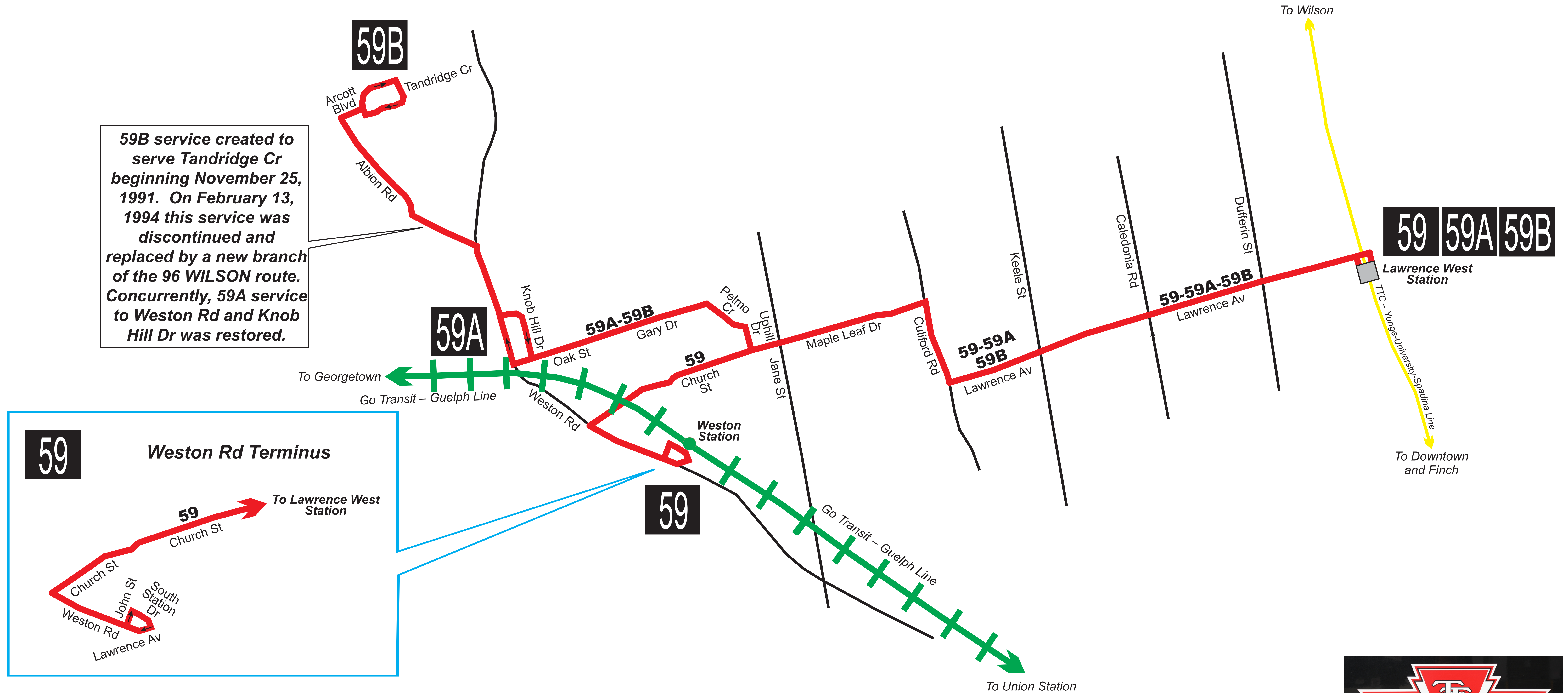
59A service revised to operate via Pellatt Av and Sainsbury Av starting April 20, 1987. Both streets were renamed as Knob Hill Dr at a later date.



59 MAPLE LEAF

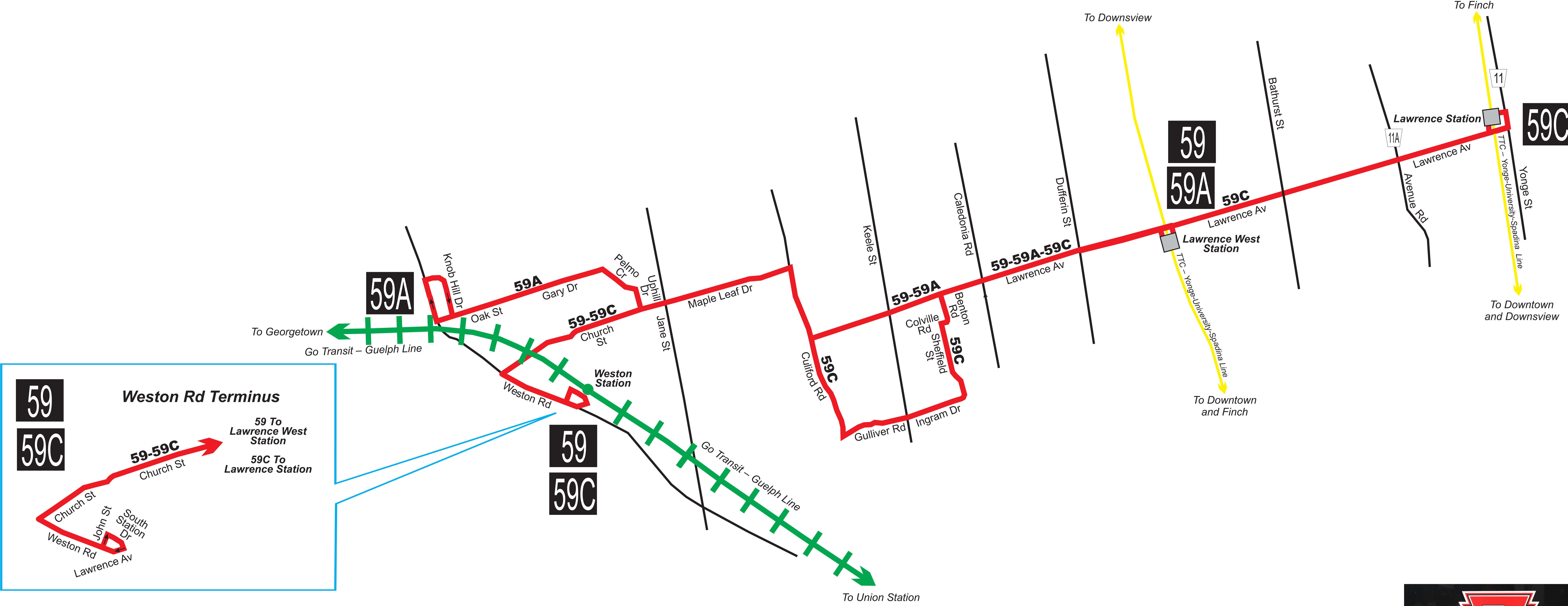
November 25, 1991 To October 4, 1996

59B service created to serve Tandrige Cr beginning November 25, 1991. On February 13, 1994 this service was discontinued and replaced by a new branch of the 96 WILSON route. Concurrently, 59A service to Weston Rd and Knob Hill Dr was restored.



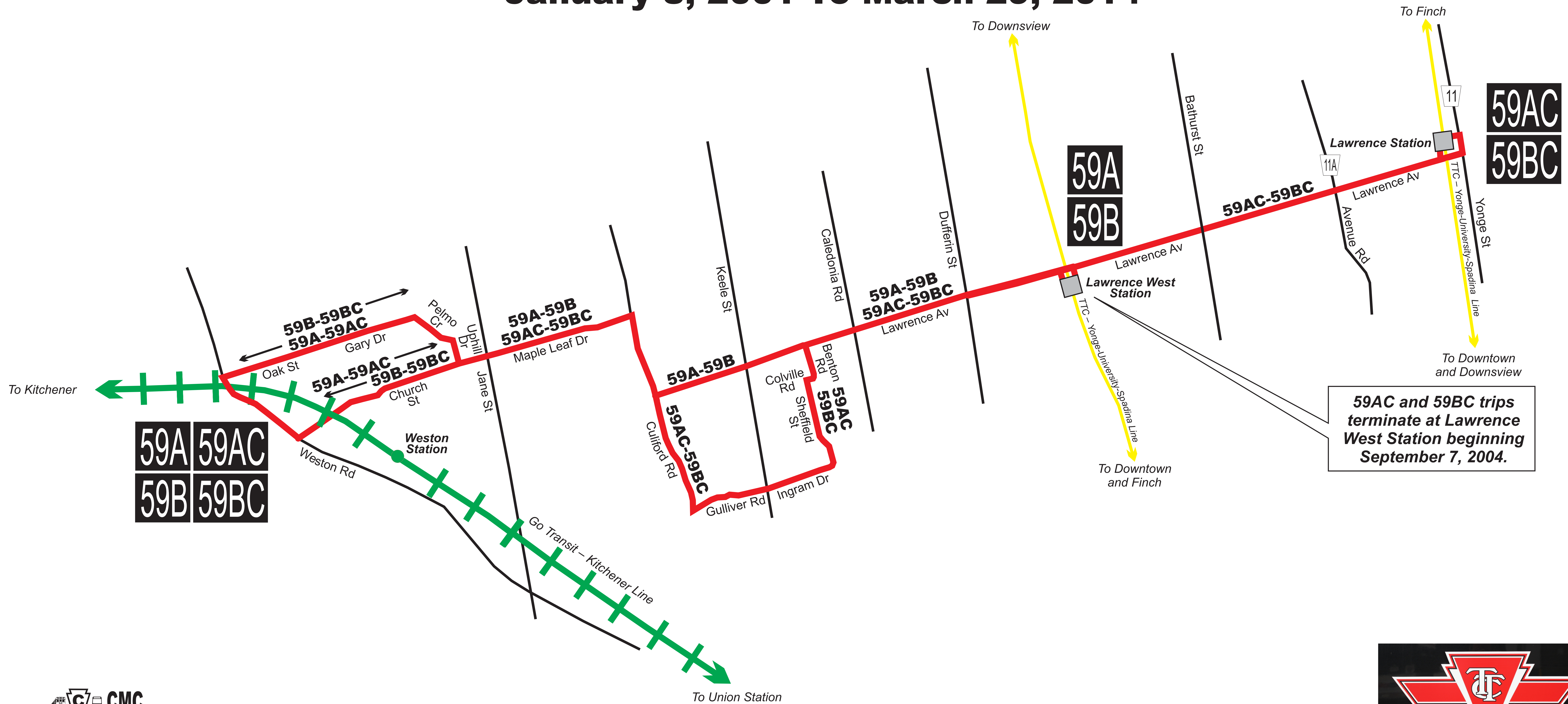
59 MAPLE LEAF

October 7, 1996 To January 5, 2001



59 MAPLE LEAF

January 8, 2001 To March 29, 2014



59 MAPLE LEAF

March 30, 2014 To Present

